

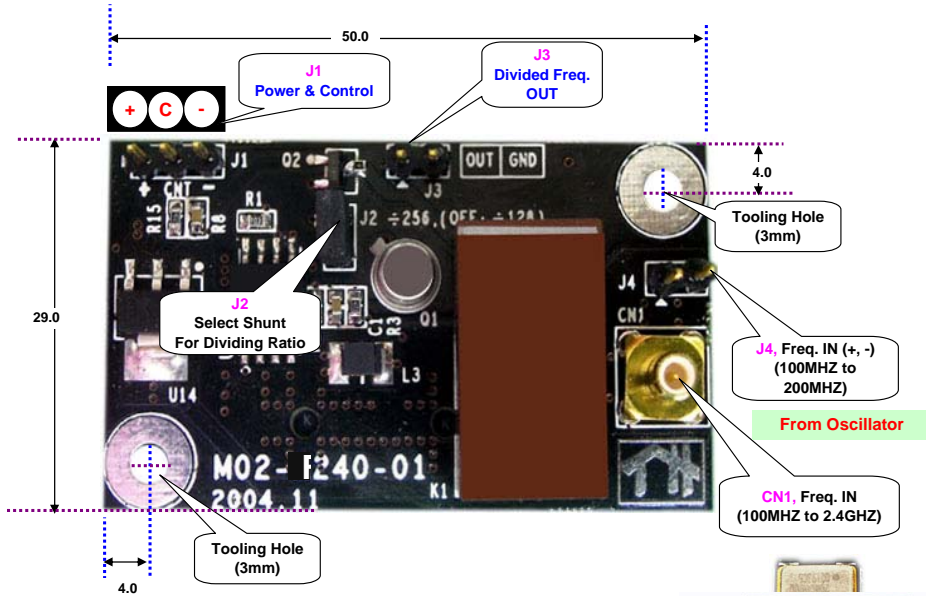
# Installation Manual

SOLUTION PROVIDER COMPANY

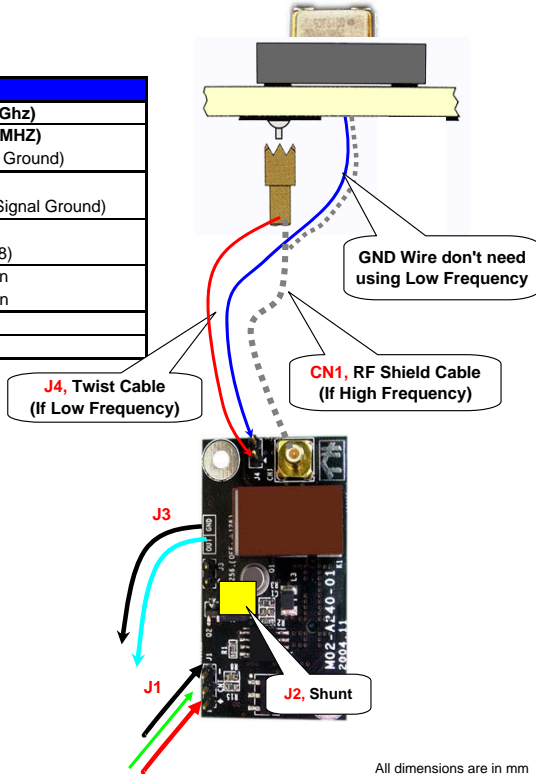
High Frequency Divider  
(P/N: M02-F240-01)

**OSCILLOS**

Thank you for choosing TH OSCILLOS



Function	Location	Description
INPUT (Alternative)	CN1	High Frequency Input (Upto 2.4Ghz)
	J4	Low Frequency Input (Upto 200MHZ) (Pin1: Signal Inpout / Pin2: Signal Ground)
OUTPUT	J3	Divided Frequency Output SILK: OUT (Divided Out) / GND (Signal Ground)
CONTROL	J2	Select Divide Ratio (Shunt ON: /256, Removed: /128)
	J1.2 (C)	Open : Normal Operation Short to GND : Disable Operation
POWER	J1.1	VCC (+)
	J1.3	GND (-)



## Specification

- INPUT FREQUENCY RANGE: 100MHZ ~ 2.4GHZ
- OPERATING SUPPLY VOLTAGE: DC 4.75V ~ 5.25V
- RATE OF Dividing: 256 or 128 (Default: 256)
- Small-Signal -15dB Bandwidth: TYP. 1Ghz (DCV-Out=5Vp-p)
- Output Impedance: 50ohms
- Minimum Input Voltage Level: 100mV ~
- DC Reasitance: 3.2Ohms
- Input Signal Isolation: Min. -80dB (ar 1.5Ghz)
- Module Size: 50mm x 29mm x17mm

\* Guaranteed use with Agilent, Teradyne, Genrad,... etc.  
\* Testing House provide Free software drivers. (Refer to TH website)

All dimensions are in mm

Please, Refer to the Testing House Website ([www.testinghouse.com](http://www.testinghouse.com)) for more information about the OSCILLOS



TESTING HOUSE INC. (Headquarters)  
161 Whitney Place, Fremont, CA 94539 /  
Tel.: 510-580-3070, Fax: 510-580-3073 E-mail: [byoung@testinghouse.com](mailto:byoung@testinghouse.com)

The products and specifications are subject to change without